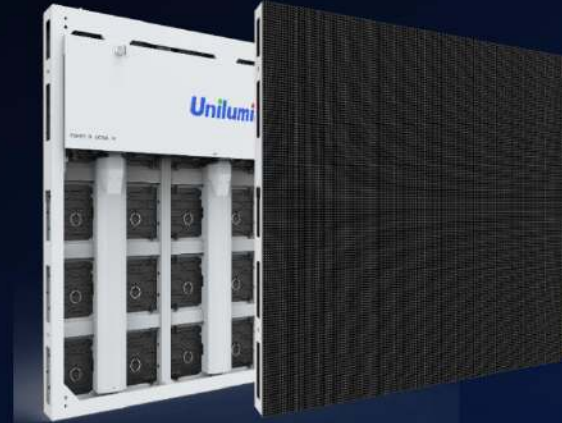


U **surface III**

Industry leading 10000 nits SMD Display Screen

Evolutionary history



Item	Usurface	Usurfacecell	UsurfaceIII
Module size	200*400	400*200	400*300
Cabinet size	1200*1200	1200*1000	800*900
Module waterproof mode	Module sealed	Module sealed	Double-sided gluing design
Material	Sheet metal aluminum	Sheet metal aluminum	Aluminum profiles
Module fixed mode	Knobs fixed	Knobs fixed	Knobs fixed
Module connection mode	Independent waterproof wire	Independent waterproof wire	Wire to plate connection
Pixel pitch	USM: P6.667、P8.33、P10、P16.667	USMII: P6.667、P8.33、P10、P16.667	USMIII: P6.667、P8.33、P10、P16.667
Maintenance	General modules, cabinet is divided into front and rear.	Modules and cabinets are general.	General modules, cabinet is divided into front and rear.

UsurfaceIII

UsurfaceIII, a **high-end** outdoor product, industry's first **10,000-level brightness** SMD display, with **IP65** high protection level, suitable for outdoor business wall, high-rise buildings and other LED display.



Unilumin Outdoor FIXED LED Screen

**Chapter
Product Features**

01

Product features



Ultra-high Brightness

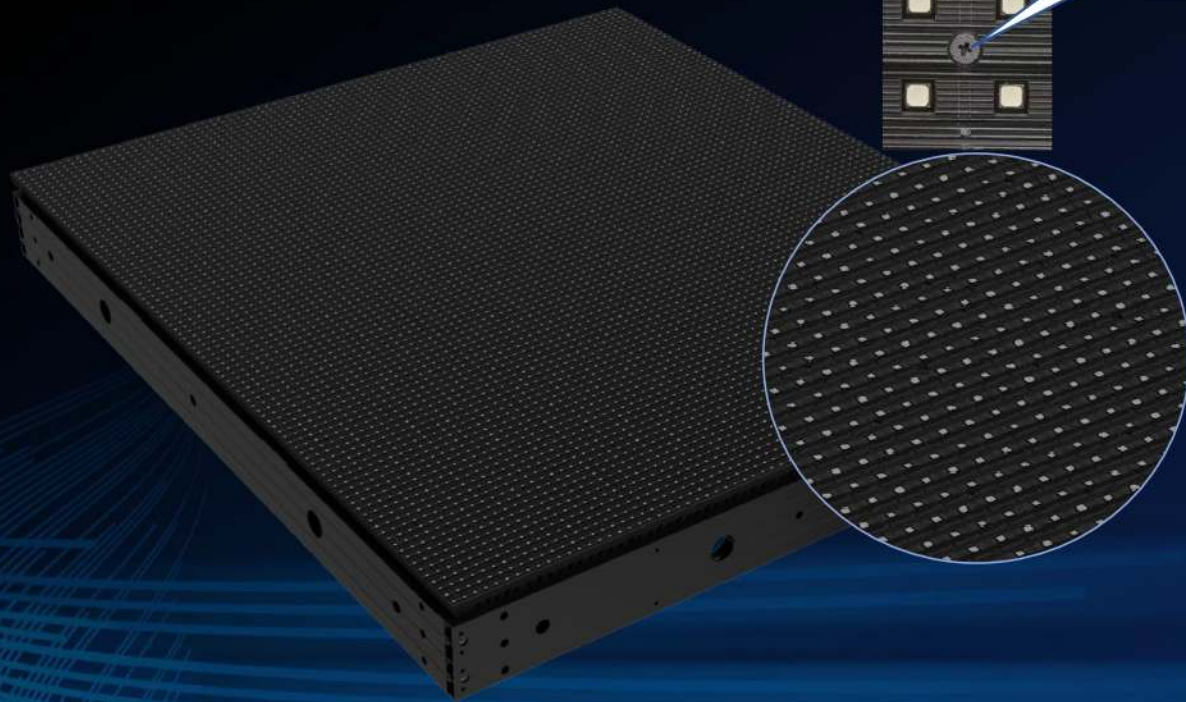
Up to **10000nits**

Ultra-high brightness——Up to 10000nits

SCREENZ
LED TECHNOLOGIES
AUTHORISED PARTNER
WWW.SCREENZ.EU

Unilumin

Mask screw with
Anti-Reflection
design



The **exclusive** SMD brightness can reach **10000NITS**, with clearer visual effect under direct sunlight and better color mixing effect.

Wide Viewing Angle

Wider than the DIP

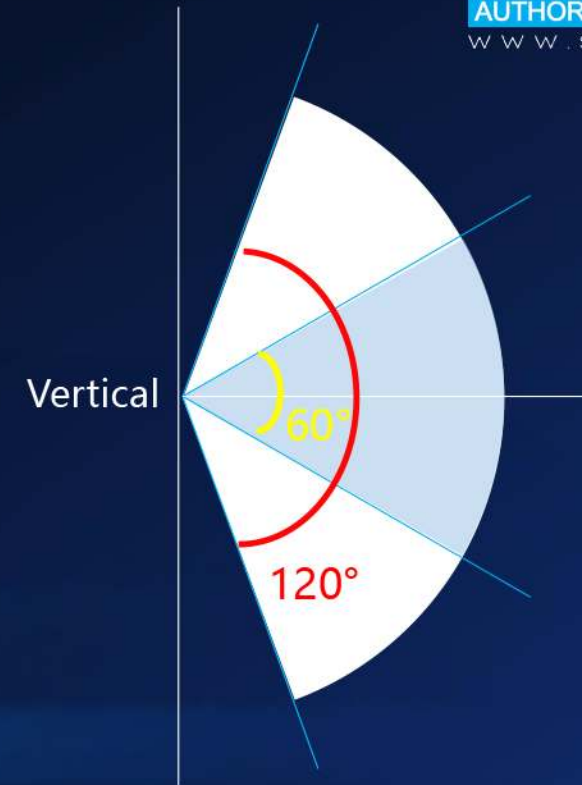
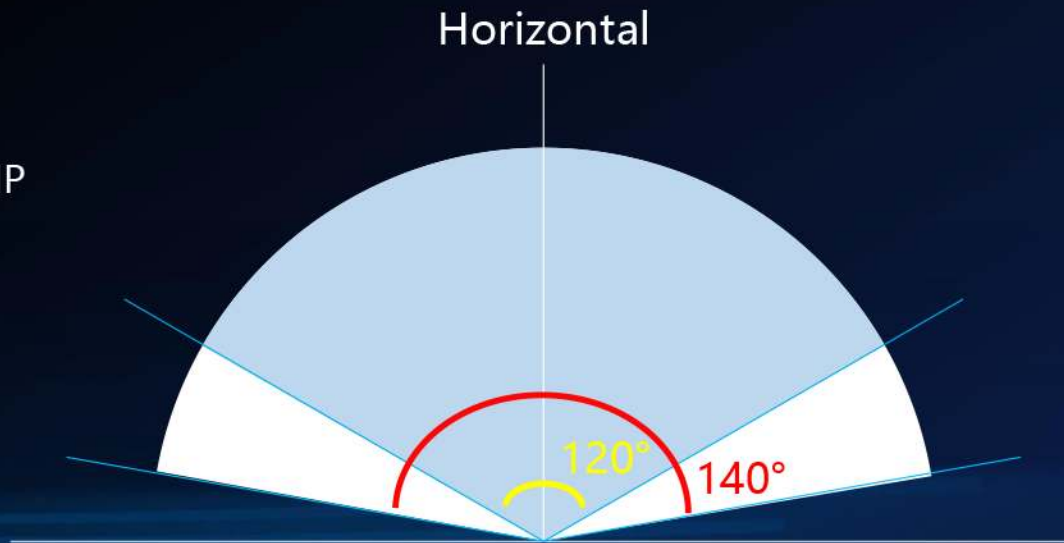
Wide viewing angle——SMD overall wider than DIP

Unilumin

SCREENZ
LED TECHNOLOGIES
AUTHORISED PARTNER
WWW.SCREENZ.EU

— SMD

— DIP



- ◆ Viewing angle of SMD is overall wider than DIP. The vertical one is even **double** that of DIP.
- ◆ Thus, LED screen for media advertising can reach great range of visibility to improve efficiency of advertising.

Good Heat Dissipation

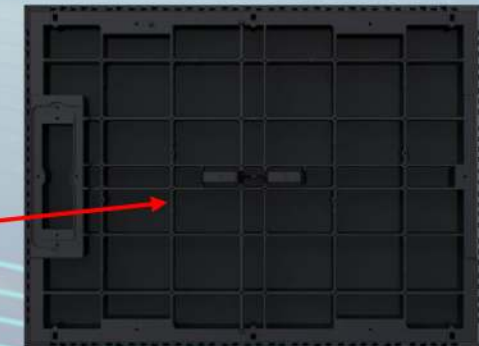
Double-sided gluing design

Good heat dissipation——5°C lower than normal module

Unilumin



1. The **frame-type box** is designed to withstand various adverse weather conditions for better heat dissipation.
2. **Double-sided gluing design**, with better heat dissipation effect, real full seal, **IP65** protection level, and more suitable for high temperature and humidity environment.
3. The bottom shell of the module is **hollow** for efficient heat dissipation.



Good heat dissipation——no fan power supply

1. **No fan power supply**, high temperature resistance, more quiet.

2. The power supply is **close to the aluminum back** cover for efficient heat dissipation.

3. Power conversion efficiency **≥92%**.



Compared to the power supply with a fan, it can **effectively prevent dust and moisture** from entering and operate more stably.



High Reliability

Double-sided gluing design-**IP65**

High reliability——IP65 High protection level

SCREENZ
LED TECHNOLOGIES
AUTHORISED PARTNER
WWW.SCREENZ.EU

Unilumin



Double-sided gluing design



Hollow shell design

- ◆ High protection grade **IP65**, stronger weather resistance, more stable.
- ◆ Bottom shell up and down through holes to prevent water accumulation

High reliability——IP65 High protection level

SCREENZ
LED TECHNOLOGIES
AUTHORISED PARTNER
WWW.SCREENZ.EU

Unilumin



Waterproof test



Module waterproof test

- ◆ The completely **waterproof design** can withstand storm weather

Convenient Maintenance

Thickness: 96mm

Weight: 26KG/m²

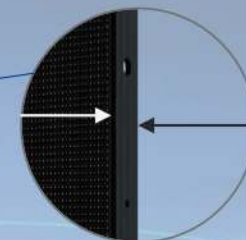
Convenient maintenance——thin and light



W800mm×H900mm×D96mm
Aluminum profiles



25.7kg/m²



96mm

UsurfaceIII: Only 96mm thickness, 25.7kg/m²

◆ **Profile aluminum cabinet**, higher strength, no rust hidden trouble.

◆ Light and light, 800*900***96mm**, the weight of **a single box is only 18.5kg**, supporting single installation and maintenance.

Convenient maintenance——save on shipping costs

Unilumin

SCREENZ
LED TECHNOLOGIES
AUTHORISED PARTNER
WWW.SCREENZ.EU



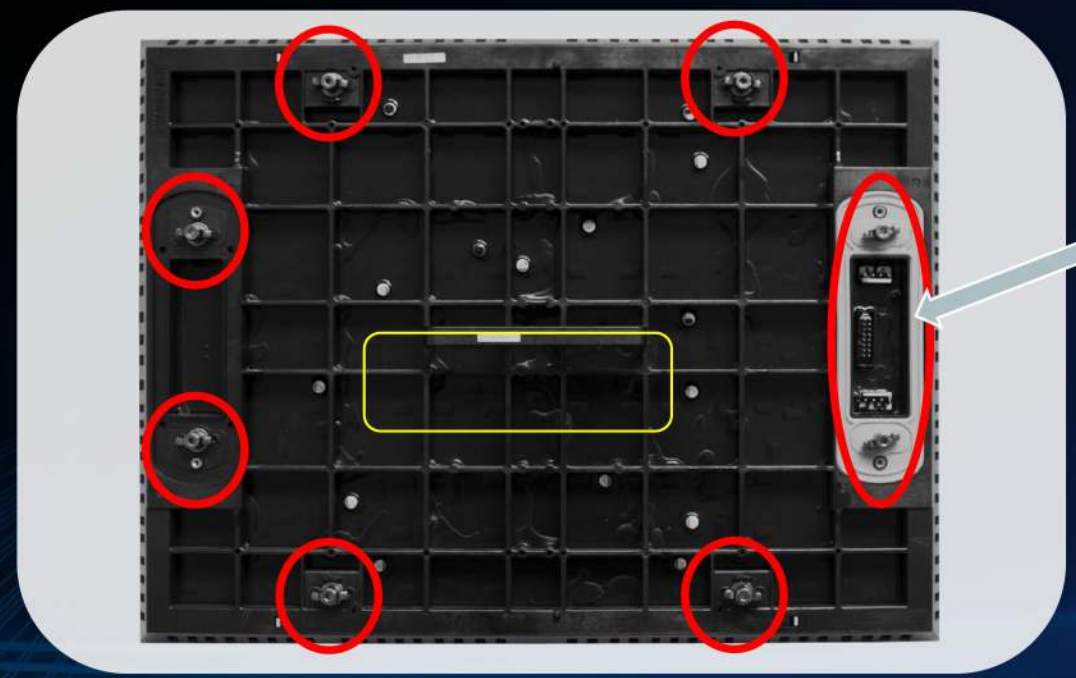
Usurfacell



Ordinary

- ◆ Light weight, **26KG/m²**, conducive to building load bearing.
- ◆ Unit cars can carry **more Usurfacell cabinets**, saving transportation and labor costs.

Convenient maintenance——knobs fixed design



- ◆ The module is fixed by **6+2 knobs**, so that the force is more uniform and easy to disassemble. The two knobs at the interface are equipped with waterproof apron to ensure the sealing and waterproof performance of the interface.
- ◆ Equipped with **module handle**, higher safety.
- ◆ Front , Rear , Front and Rear maintenance, **three kinds of maintenance methods** are optional.



Energy saving

Save 20% of electricity

Energy saving—20% less than conventional products

Unilumin

SCREENZ
LED TECHNOLOGIES
AUTHORISED PARTNER
WWW.SCREENZ.EU



Usurfacell 10	Ordinary SMD P10
6500nits	6500nits
217W/m ²	267W/m ²
100m ² Usurfacell 10 will save electricity of 20,000 kwh within one year	

- ◆ The power consumption is only 217W/m², about 20% lower than ordinary products.
- ◆ Low voltage energy saving high bright design, the same situation compared to conventional SMD products to save about 20% of electricity.

Unilumin Outdoor FIXED LED Screen

Chapter
Product specifications

02

Main specifications

Item	Usurfacell (800*900)											
Pixel pitch	6.67			8.33			10			16.67		
brightness (nits)	6500	8000	10000	6500	8000	10000	6500	8000	10000	6500	8000	10000
Maintenance	Front		Rear	Front		Rear	Front		Rear	Front		Rear
Weight (kg/m ²)	29		26	29		26	29		26	29		26
Size (mm)	W800*H900*D96											
Contrast ratio	5500:1	7000:1	9000:1	5500:1	7000:1	9000:1	8000:1	12000:1	16000:1	8000:1	12000:1	16000:1
IP	Front : IP65/IP65 Rear: IP65/IP54											
Input power <Max> (W/ m ²)	650	750	800	650	750	800	650	750	800	650	750	800
Input power <Typical> (W/ m ²)	217	250	267	217	250	267	217	250	267	217	250	267

Notes: In addition to 800*900, there are many box sizes that can be customized, such as 800*1200.

Unilumin

TOGETHER, FOR A BRIGHTER FUTURE

Unilumin Group Co., Ltd.

Headquarters: 112 Yongfu Rd., Qiaotou Village, Fuyong Town, Baoan District, Shenzhen 518103 China.

Daya Bay Factory : Longsheng Fifth Road, western Daya Bay, Huiyang District, Huizhou, China.

Pingshan Factory : 6 Lanjing North Road, Pingshan District, Shenzhen 518118 China.

Tel: +86-755-29918999

Fax: +86-755-29912092

Sales E-mail: leddisplay-roger@unilumin.com

Official website: <http://www.unilumin.com>

